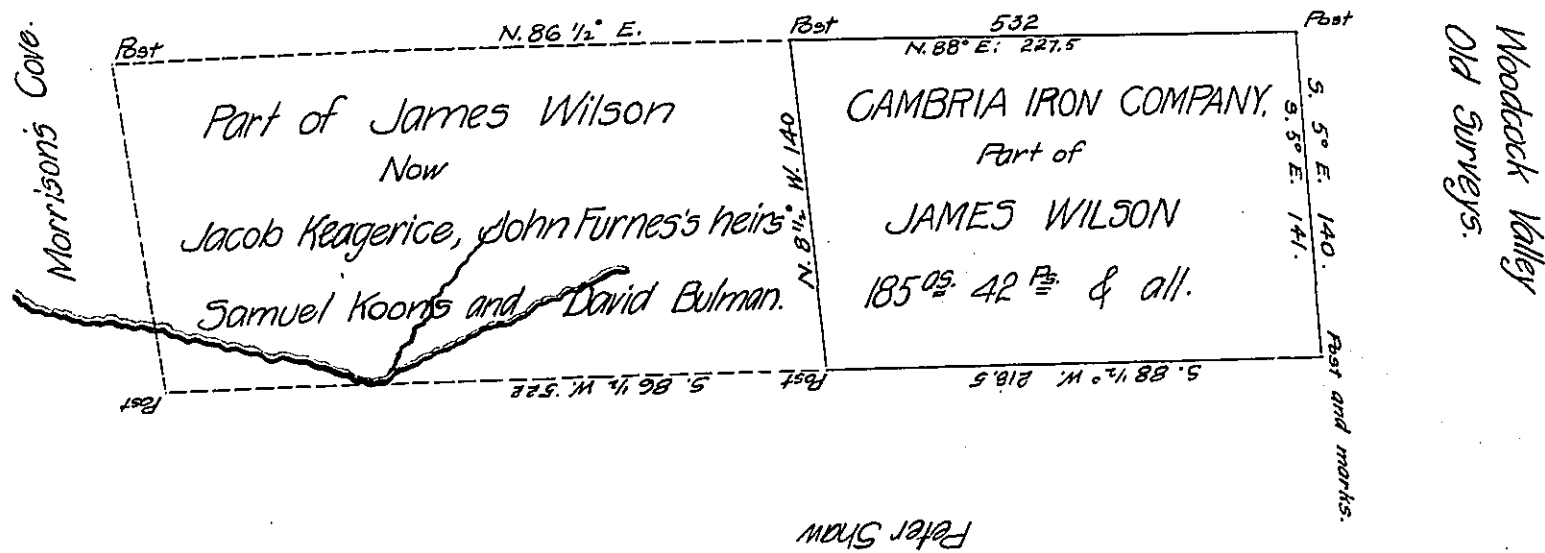


Ignatius Hardin



Peter Shaw

Situate in Hopewell And Woodbury township Bedford County Containing 434 Acres 125 perches And the usual allowance of Six pr Cent for Roads &c., Surveyed for James Wilson the 17th day of October 1794, On Warrant dated the 19th day of Sept. 1794, the Eastern part of the above survey as represented by the above Draft lies in Hopewell township and contains 185 acres 42 perches & the usual allowance, and now belongs to the Cambria Iron Company, for whom it was surveyed for Patenting by David Peelor the 30th day of October, 1872, Examined and approved this 14th day of the 12th moth Dec. 1872.

Hiram Blackburn C.S.

To Robert B. Beath

S.G.

IN TESTIMONY that the above is a copy of the original remaining on file in the Department of Internal Affairs of Pennsylvania, made conformably to an Act of Assembly approved the 16th day of February, 1833, I have hereunto set my Hand and caused the Seal of said Department to be affixed at Harrisburg, this 13th day of September 1907.

Henry Fowler
Secretary of Internal Affairs.